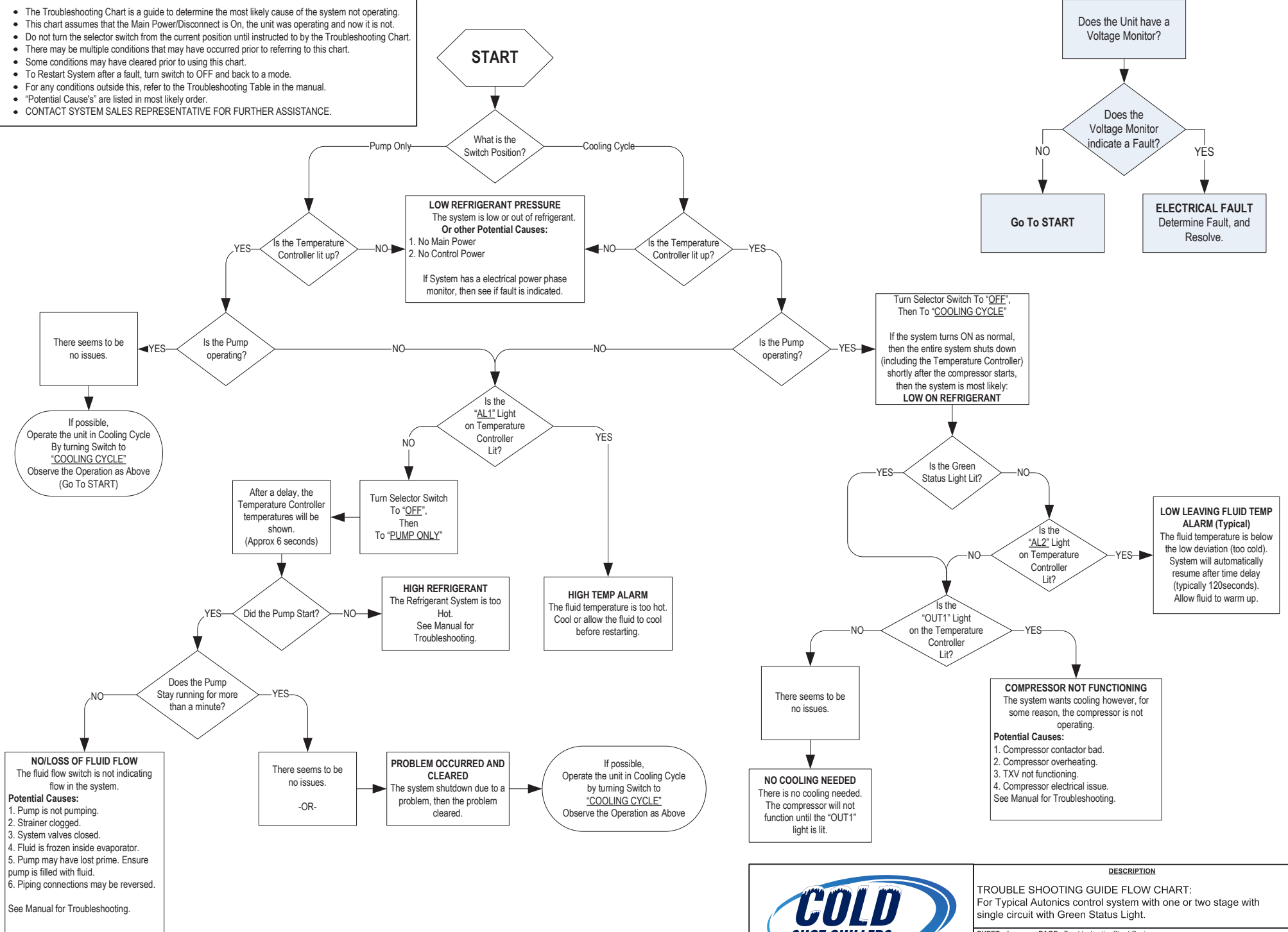


IMPORTANT!! FLOW CHART NOTES

- The Troubleshooting Chart is a guide to determine the most likely cause of the system not operating.
- This chart assumes that the Main Power/Disconnect is On, the unit was operating and now it is not.
- Do not turn the selector switch from the current position until instructed to by the Troubleshooting Chart.
- There may be multiple conditions that may have occurred prior to referring to this chart.
- Some conditions may have cleared prior to using this chart.
- To Restart System after a fault, turn switch to OFF and back to a mode.
- For any conditions outside this, refer to the Troubleshooting Table in the manual.
- "Potential Cause's" are listed in most likely order.
- CONTACT SYSTEM SALES REPRESENTATIVE FOR FURTHER ASSISTANCE.



DESCRIPTION	
TROUBLE SHOOTING GUIDE FLOW CHART: For Typical Autonics control system with one or two stage with single circuit with Green Status Light.	
SHEET: 4	PAGE: TroubleshootingChart-Basic
EDIT DATE: July 14, 2023	
FILE: DWG-ELEC_AutonicsControl-22RR(1or2stage)withOptions_071423.vsd	